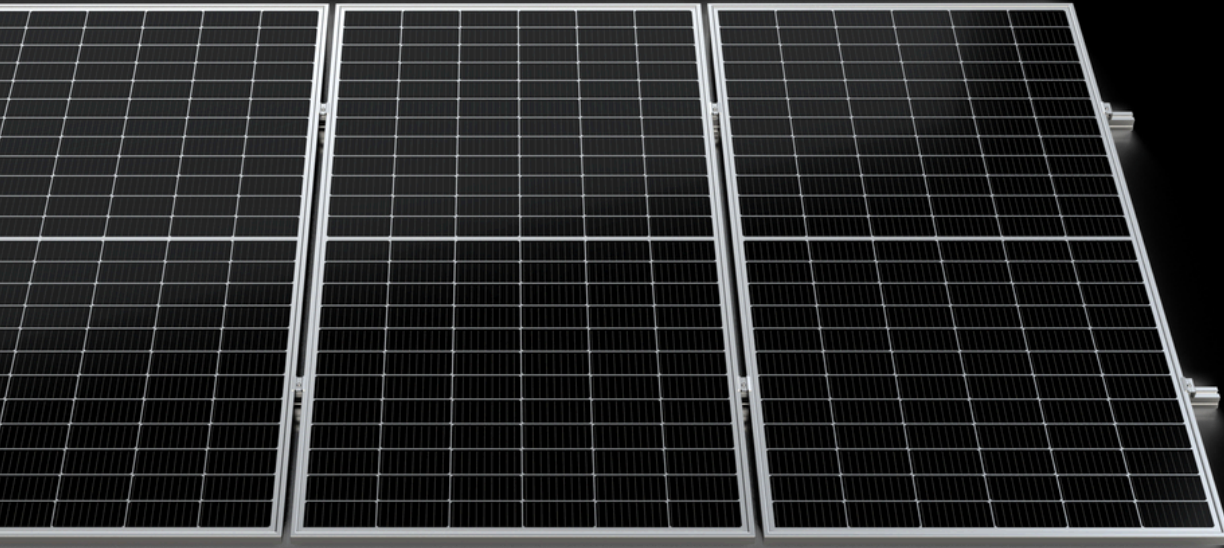


STANDART^{AI}

Solar Mounting Systems Product Brochure



Kırklareli OSB 7. Cadde No:18
39100 Merkez-Kırklareli
Türkiye

standartaluminyum.com

EN

Contents

Introduction

- 2 Welcome to Standart
- 3 Solar Mounting Systems

Rails & Clamps

- 5 S-Raptor Editions
- 6 S-Guard Editions
- 7 S-Clamp Editions

Pitched Roofs

- 9 Tile Roofs
- 10 Universal Connector & Hanger Bolts
- 11 Trapezoidal & Sandwich Roofs
- 12 Standing Seam Metal Roofs
- 13 Shingle Roofs
- 14 Bitumen Roofs

Flat Roofs

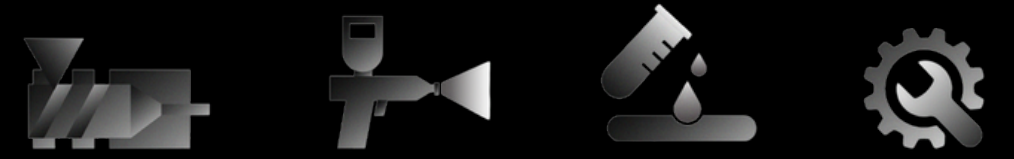
- 16 S-Flat Hybrid+
- 17 S-Flat GridPro



Welcome to Standart.

**This is where ideas turn into reality,
transparency strengthens collaboration,
and challenges are overcome through teamwork.**

Standart, located in Kırklareli OSB, Türkiye, operates a 20,000 m² modern facility integrating aluminum extrusion, anodizing, electrostatic powder coating, mechanical processing, assembly, and packaging lines, delivering aluminum profile and system solutions for architectural and industrial applications.



Solar Mounting Systems

We believe every solar project begins with a vision. At Standart, we transform that vision into reality with reliable and innovative solar mounting systems. Designed for strength, flexibility, and durability, our solutions ensure maximum performance and long-term security for every installation.

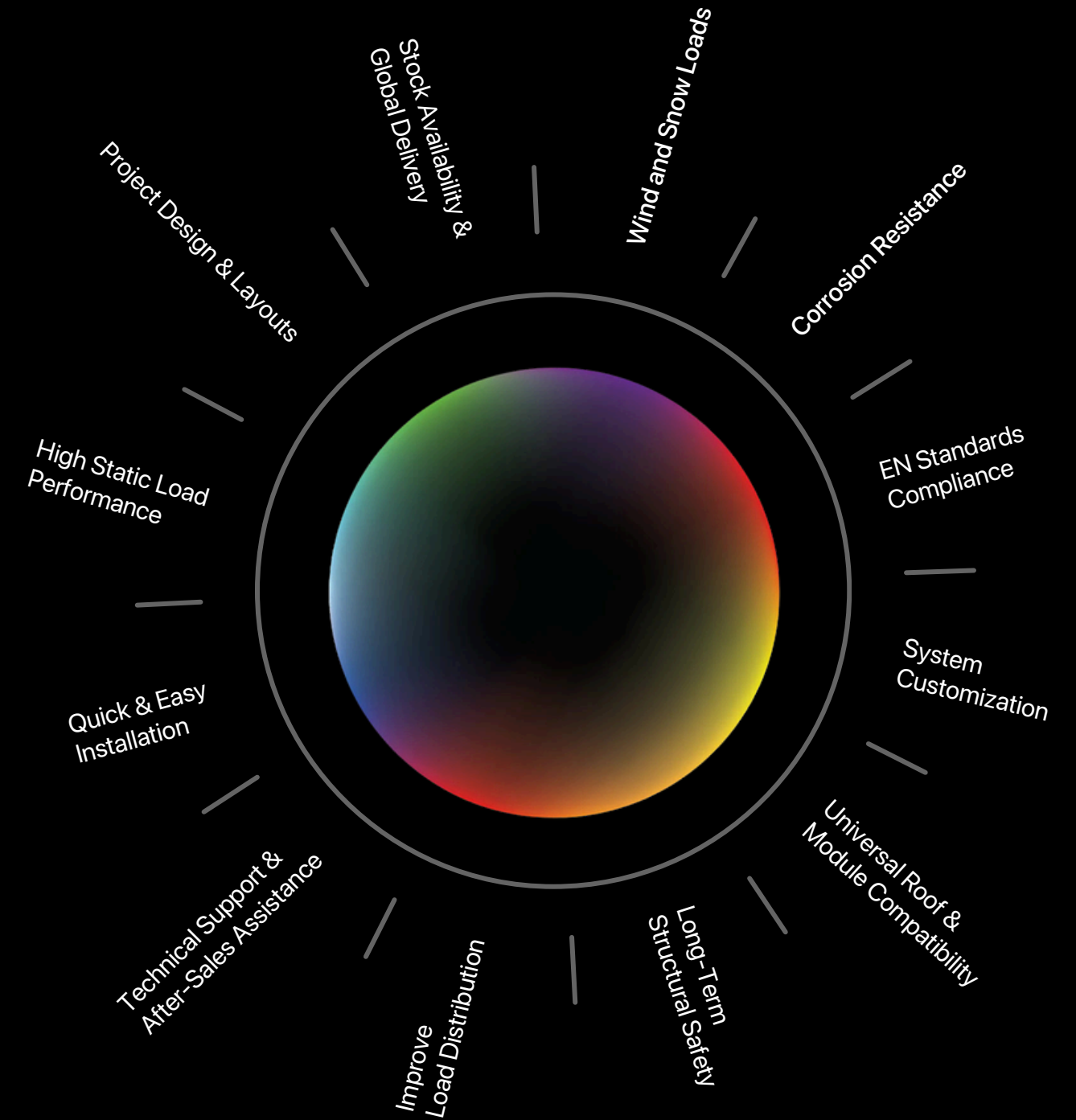
15 Year System Warranty



1 ecosystem.
4 continents.
25+ countries.
70+ system solutions.
200+ mounting products.
2+ million panels secured.
Trusted partners worldwide.
Unlimited possibilities.

360°
Provider

For Installers
For Wholesalers
For EPC Companies
For Project Developers

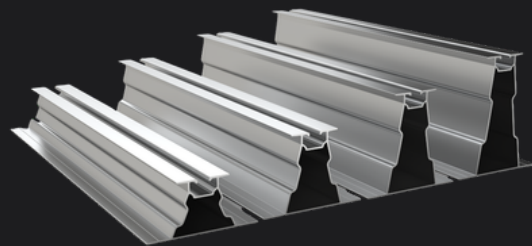


Rails & Clamps

Available in various models, heights, lengths, and colors — the rails and clamps adapt to portrait or landscape orientations with minimal components, combining easy project customization, high efficiency, and reliable safety.

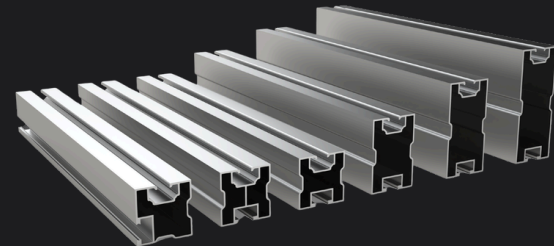
S-Raptor Editions

Direct mounting - quick, easy and safe.



S-Guard Editions

Unlimited possibilities.

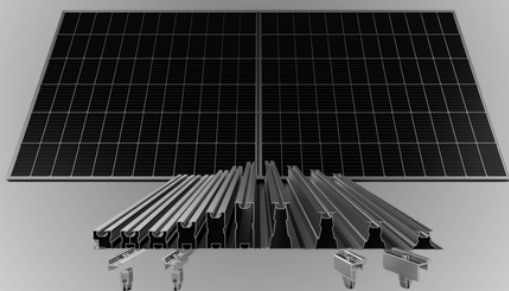


S-Clamp Editions

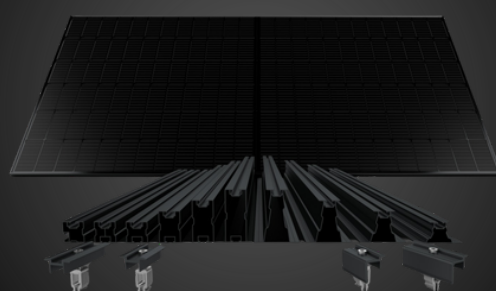
Universal for all solar panels with 30–40 mm frame height.



Colors - Mill Finished Classics.



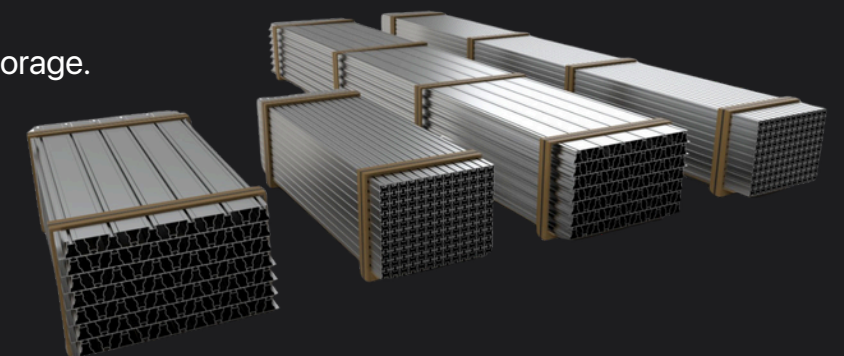
Colors - Black Anodized Sleek aesthetics with extra protection.



Packing and Shipping

Custom packaging solutions for safe transportation and efficient storage.

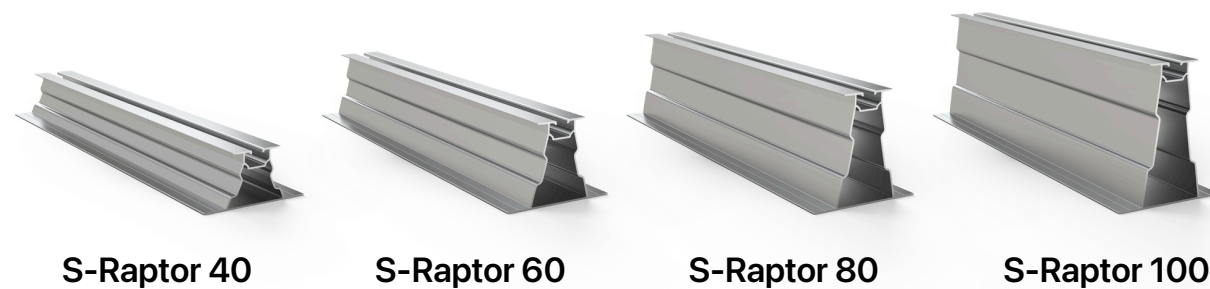
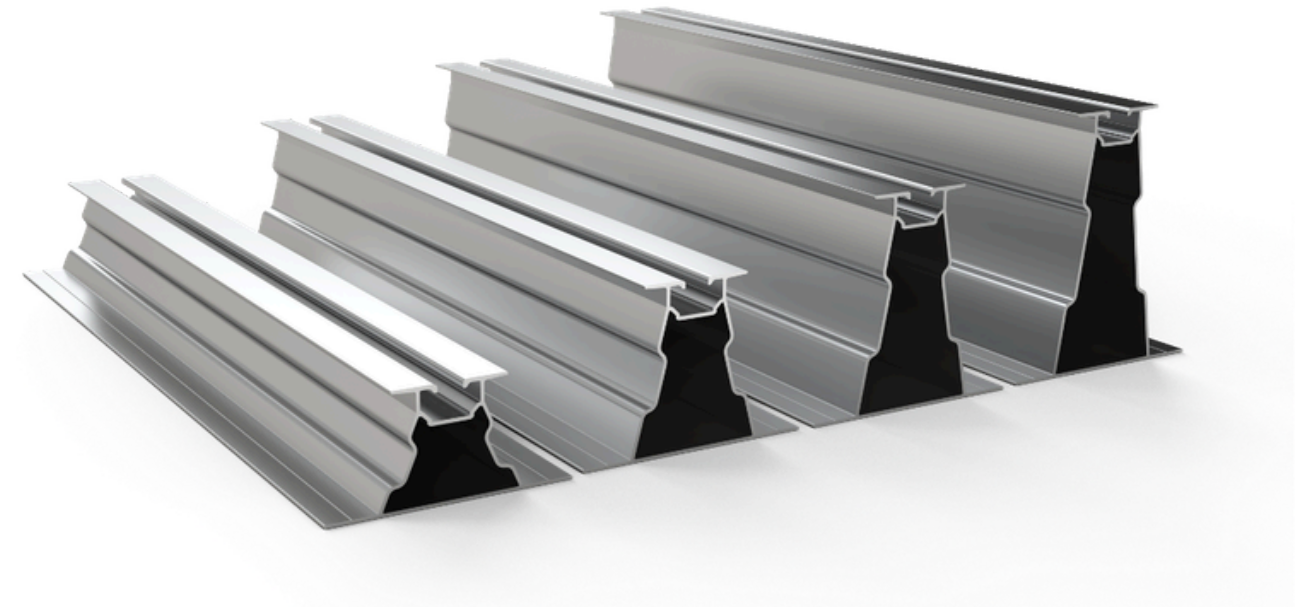
THANKS TO OUR COMPACT PACKAGING, MORE PRODUCTS ARE SHIPPED IN EVERY DELIVERY, LOGISTICS EFFICIENCY INCREASES, AND TRANSPORT-RELATED EMISSIONS ARE REDUCED.



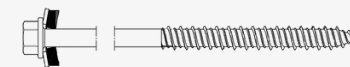
S-Raptor Editions

S-Raptor Editions combine strength, balance, and durability with the unique triangular design. Highlighted by quick installation, flexible configuration, and four height options, they deliver efficient solutions for every system.

- + Quick and simple installation - maximum performance with minimum equipment!
- + Superior tensile, bending, and torsional strength with the unique triangular design
- + The open screwing area allows for easy and safe installation
- + Compatible with S-Flat extensions, offering an additional 10° inclination
- + Colors: Mill Finished and Black Anodized
- + Lengths: 250-7500 mm
- + Top Width: 40 mm, Bottom Width: 86 mm
- + Material: EN AW-6063 / T66 aluminium



Carbon Steel Screws
M6,3x(35-245 mm)



Specially for
WOOD
STEEL
CONCRETE
SUBSTRUCTURES

Metal Sheet Screws
M5,5



Fastening for
Sandwich Panels
Trapezoidal Sheets
Corrugated Metal Sheets

EPDM
Waterproofing

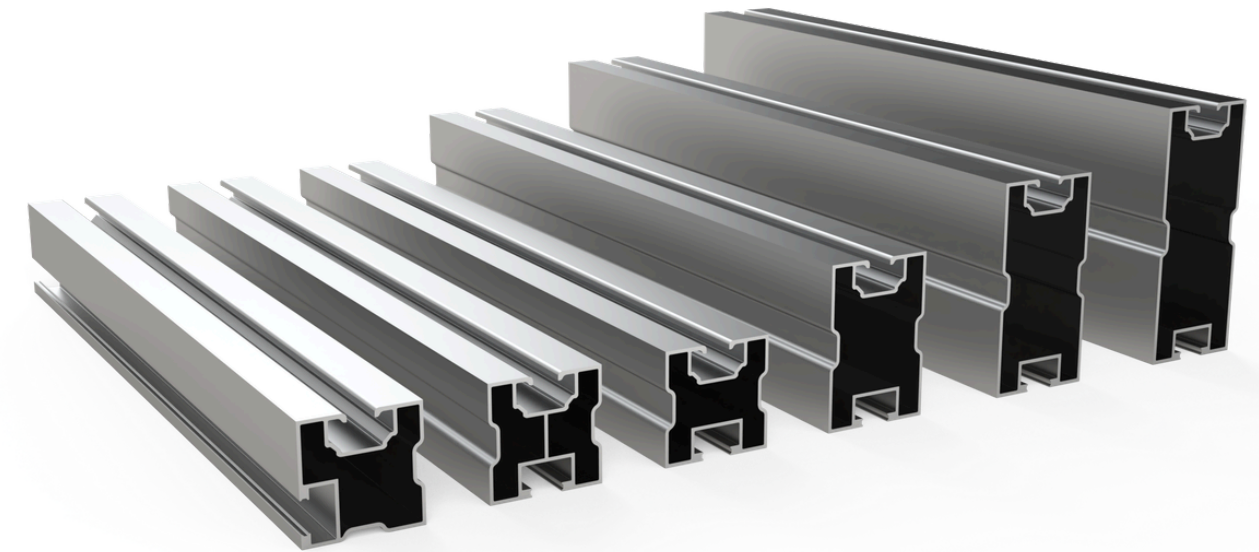


Pre-cut
3x30x86 mm
Pull & Stick!

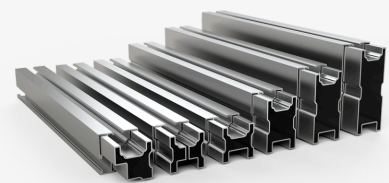
S-Guard Editions

S-Guard Editions, adaptable to all roof and facade types, diverse installation areas, and various inclinations, provide strong, efficient, and flexible solutions with six models and four height options.

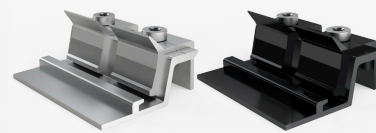
- + Optimized profile designs and balanced load distribution
- + Special system components for all roof types and layouts
- + Compatible with S-Flat extensions, offering an additional 10° inclination
- + Compact packing - easy to store and handle
- + Mechanical Connections: M8 (top), M10 (bottom)
- + Colors: Mill Finished and Black Anodized
- + Width: 40 mm
- + Lengths: 250-7500 mm
- + Material: EN AW-6063 / T66 aluminium



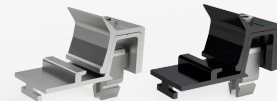
Rail Connectors



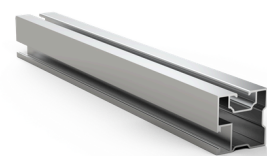
S-Guard InternalConnectors
Specially for all models - 150 mm



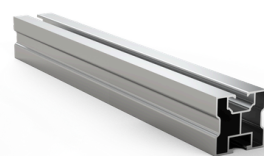
S-Guard ProConnector
External Rail Connector



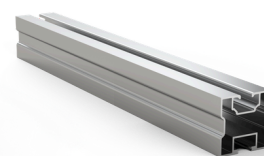
S-Guard ProCross
Cross Connector



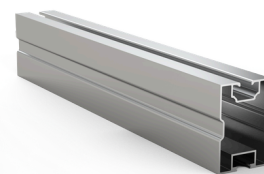
S-Guard SE



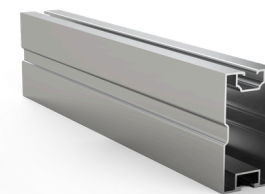
S-Guard 40+



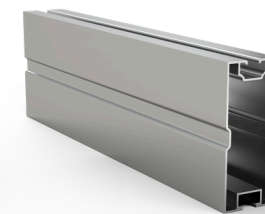
S-Guard 40



S-Guard 60



S-Guard 80

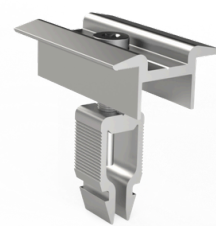
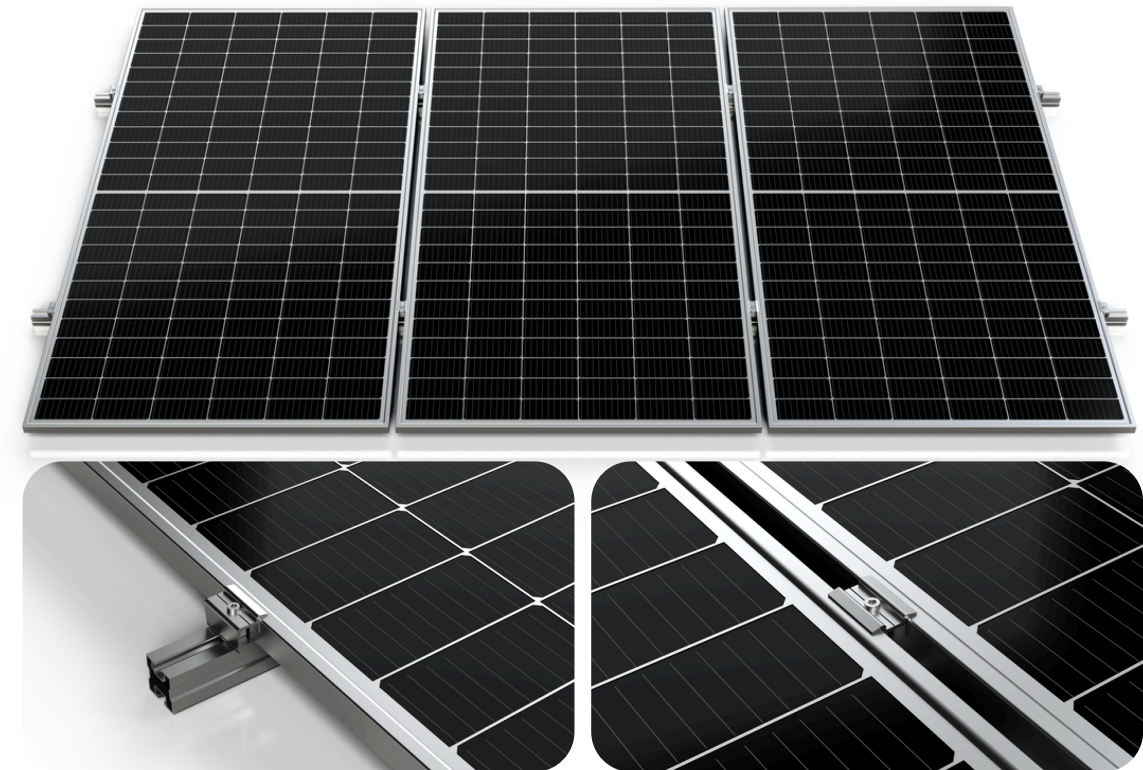


S-Guard 100

S-Clamp Editions

Universal clamp — compatible with all solar panels with frame thicknesses from 30 mm to 40 mm.

- + Pre-assembled!
- + Quick, easy, and safe to install
- + Clamp Lengths: 60, 100 mm
- + Compatible for landscape and portrait orientations
- + Colors: Mill Finished and Black Anodized
- + Compatible with our all rails and extensions
- + Grounding pin is available optionally
- + Spring is available optionally
- + Materials: EN AW-6063 T/66 aluminium, A2 stainless steel



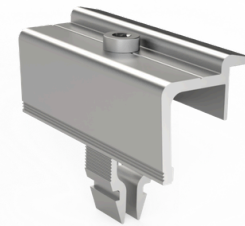
S-Clamp OneMid
Mill Finished



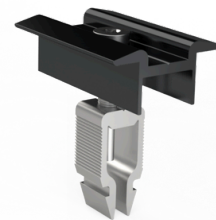
S-Clamp OneEnd
Mill Finished



S-Clamp OneMid+
Mill Finished



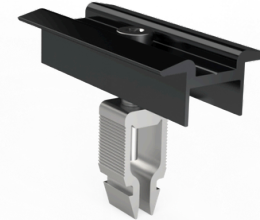
S-Clamp OneEnd+
Mill Finished



S-Clamp OneMid
Black Anodized



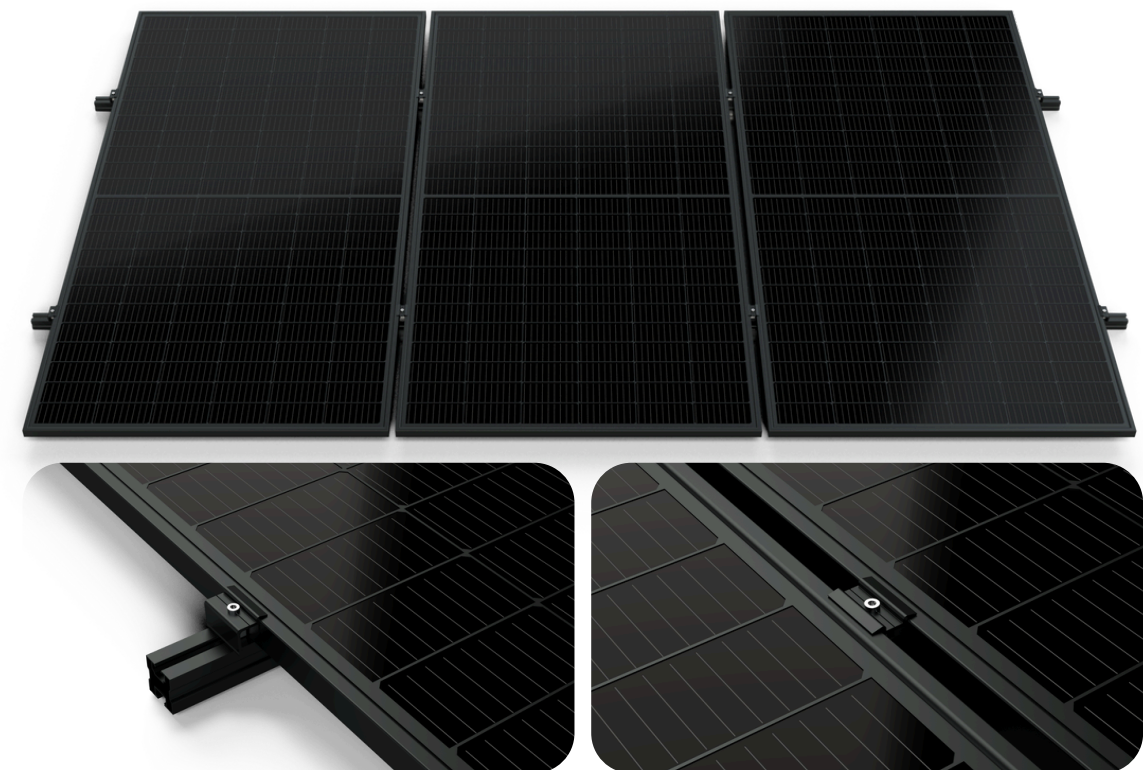
S-Clamp OneEnd
Black Anodized



S-Clamp OneMid+
Black Anodized

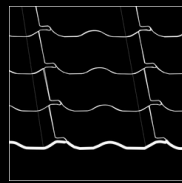


S-Clamp OneEnd+
Black Anodized

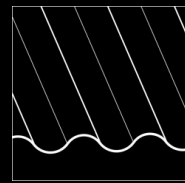


Pitched Roofs

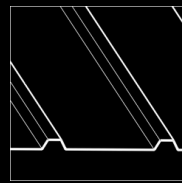
With a versatile product range and smartly designed systems, our solar mounting solutions adapt effortlessly to all roof types — built for reliability, durability, and long-term performance.



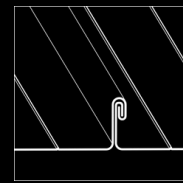
Tile
Roofs



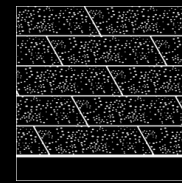
Sinus
Roofs



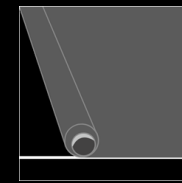
Trapezoidal &
Sandwich Roofs



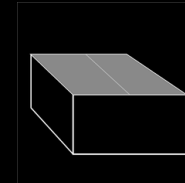
Standing Seam
Metal Roofs



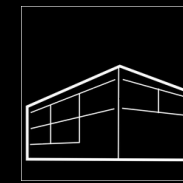
Shingle
Roofs



Roll-Bitumen
Roofs



Flat
Roofs

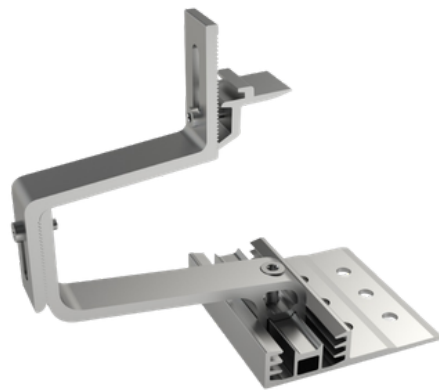


Facades

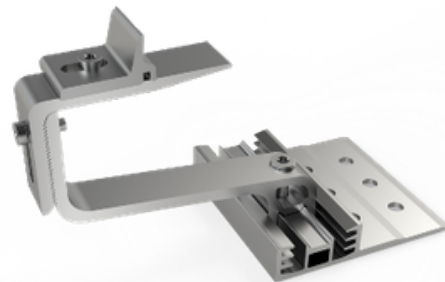
Tile Roofs

Adjustable tile hooks designed for compatibility with various roof and tile types.

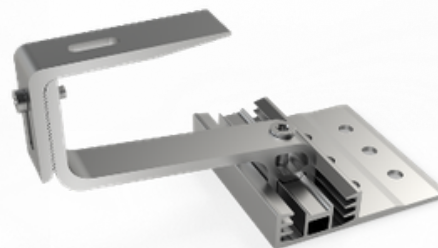
- + Compatible for all common tile types
- + Quick, easy, and safe to install
- + Easy to store and handle
- + Superior resistance against wind, snow, and seismic loads
- + Clamping possible on all sides of your module frames
- + Specialized wood screws in various sizes with sealing washer option
- + Compatible with our S-Guard Editions rails
- + Materials: EN AW-6063 T/66 aluminium, A2 stainless steel



S-Hook Pro



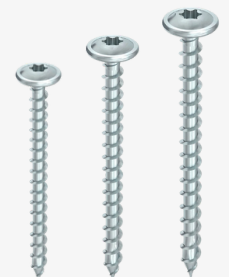
S-Hook SE



S-Hook Air

Wood Screws
A2 Stainless Steel

M8x80
M8x100
M8x120



Universal Connectors & Hanger Bolts

Maximum safety for all roof types! With strong purlin connection on concrete, steel, and wooden structures, it ensures superior durability against all challenging conditions.

- + Suitable for all roof and facade applications
- + Superior resistance against wind, snow, and seismic loads
- + Special purlin screws for wood, steel, and concrete
- + S-Connector series lengths: 50 mm
- + Compatible with our S-Guard Editions rails
- + Flashings for wooden based bitumen and shingle roofs
- + S-Connector Adapter is compatible with S-Guard CrossPro
- + Mechanical Connections: M10
- + Materials: EN AW-6063 T/66 aluminium, A2 stainless steel



S-Connector
Edge



S-Connector
Flat



S-Connector
Air



S-Connector
Adapter

Hanger Bolts
A2 Stainless Steel

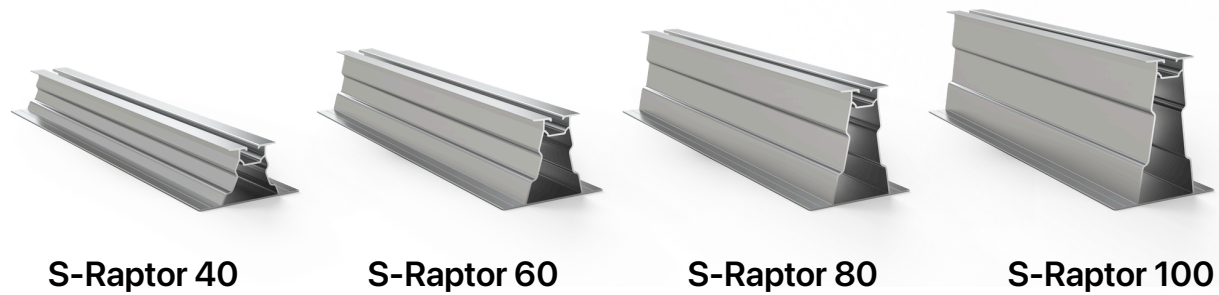
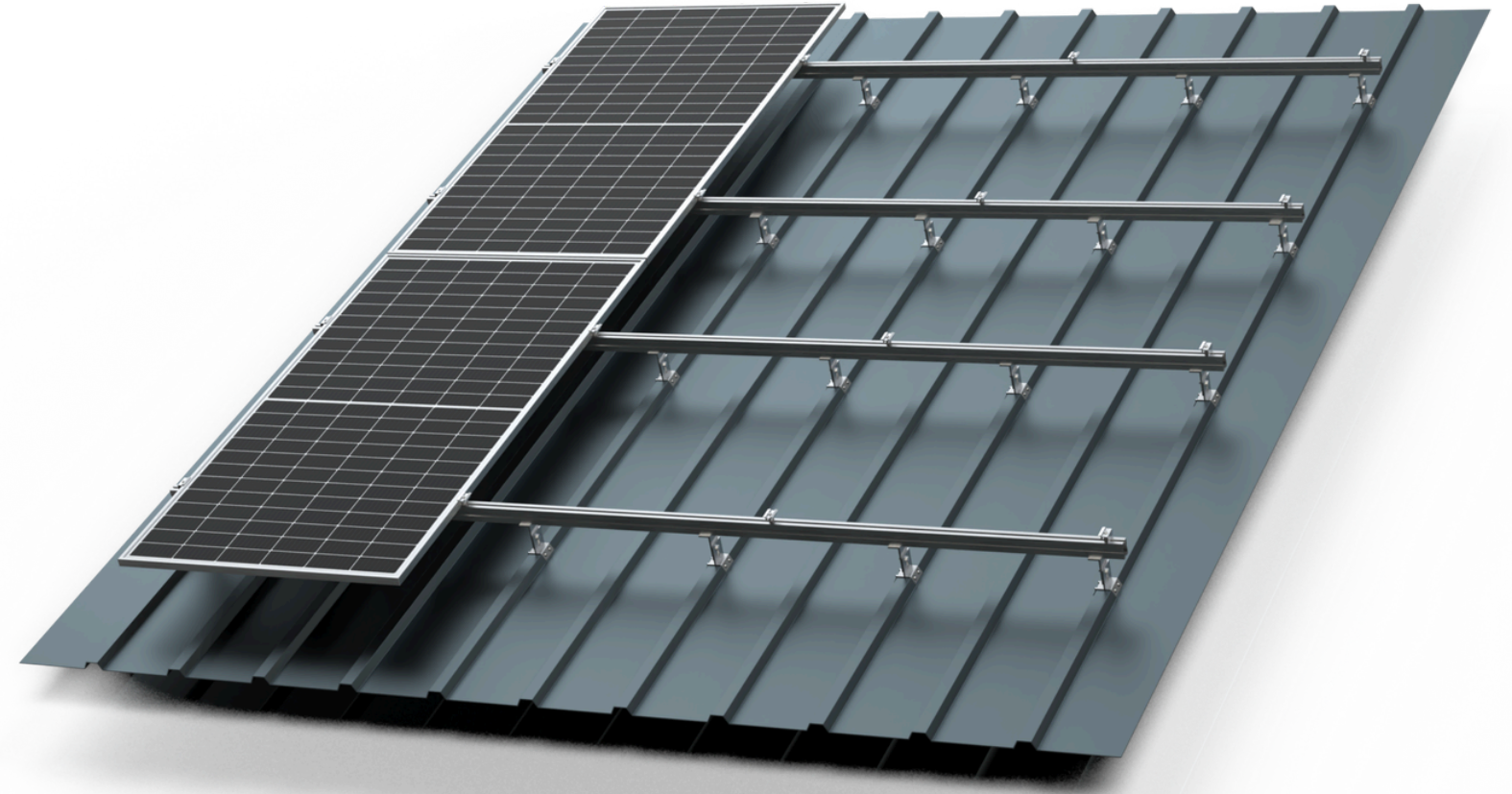


Specially for
WOOD
CONCRETE
STEEL

Trapezoidal & Sandwich Roofs

Versatile systems for trapezoidal and sandwich roofs, available in a wide range of models and height options — delivering secure installation, maximum adaptability, and reliable performance across diverse roof types, project layouts, and panel types.

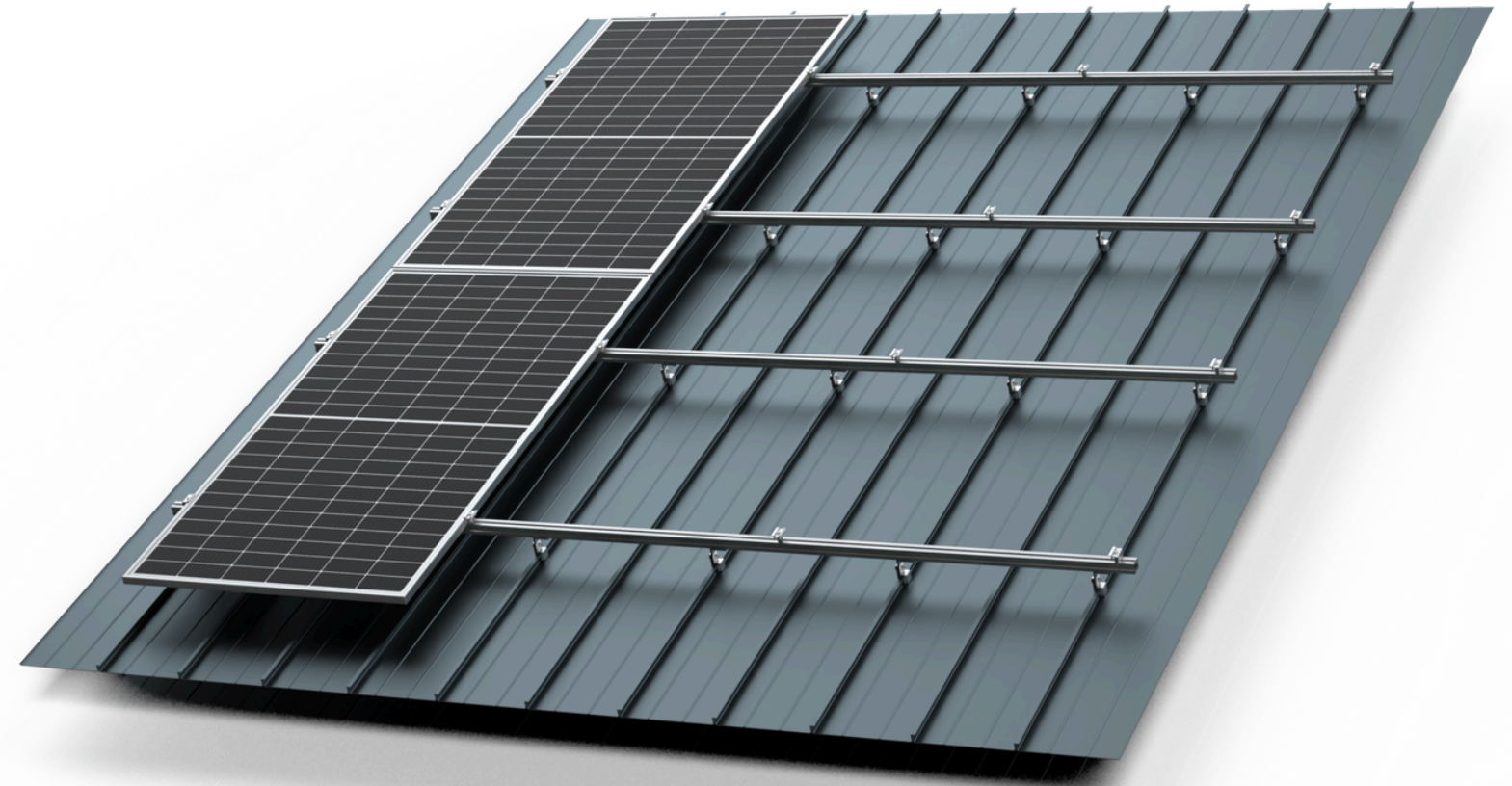
- + Compatible with all roof and facade applications
- + Superior resistance against wind, snow, and seismic loads
- + S-SuperRack Series are available in various sizes
- + Rail Heights: 40, 60, 80, 100 mm
- + Rail Lengths: 250 mm - 7500 mm
- + Materials: EN AW-6063 T/66 aluminium, A2 stainless steel, EPDM



Standing Seam Metal Roofs

Specifically engineered for standing seam roofs, these systems ensure strong non-penetrating clamping, preserving roof integrity while providing flexible mounting options, secure installation, and long-term performance.

- + Connection by clamping – 0 drilling!
- + Suitable for roof and facade applications
- + The ultimate clamping solution — double set screws for maximum stability
- + Mechanical connections: M8, M10
- + Suitable for landscape and portrait module installation
- + Suitable for vertical and horizontal railing
- + Compatible with S-Guard Editions rails
- + Materials: EN AW-6063 T/66 aluminium, A2 stainless steel



S-Lock Folded



S-Lock Bulb

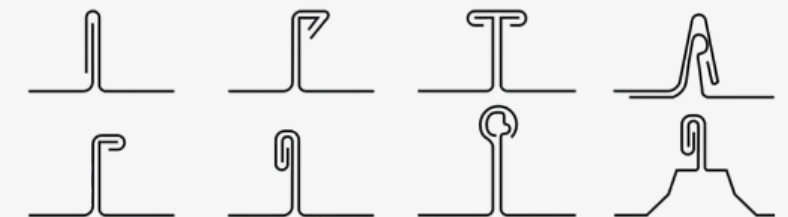
Technical Details

S-Lock Folded
 Height: 93 mm
 Length: 40 mm
 Standing Seam Max Width: 16 mm

S-Lock Bulb
 Height: 104 mm
 Length: 40 mm
 Standing Seam Max R: 24 mm

Standing Seam Types

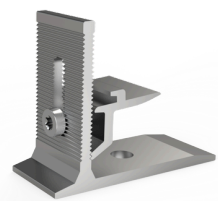
Single Folded, Double Folded, Bulb, and etc.



Shingle Roofs

Safe and practical mounting systems for asphalt shingle roofs.

- + Chemical compatibility with asphalt-based surfaces — no risk of deformation or interaction
- + High resistance to UV rays and complete waterproofing
- + Suitable for landscape and portrait orientations
- + Compatible with S-Guard Editions
- + Materials: EN AW-6063 T/66 aluminium, A2 stainless steel, EPDM, butyl



S-Hero
Universal Adapter



S-Connector Edge



S-Connector Flat



S-Connector Air



S-Connector Adapter

Hanger Bolts
A2 Stainless Steel



Specially for
WOOD
CONCRETE
STEEL

Flashings
Aluminium
EPDM



S-Flashing 360*

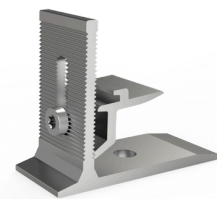
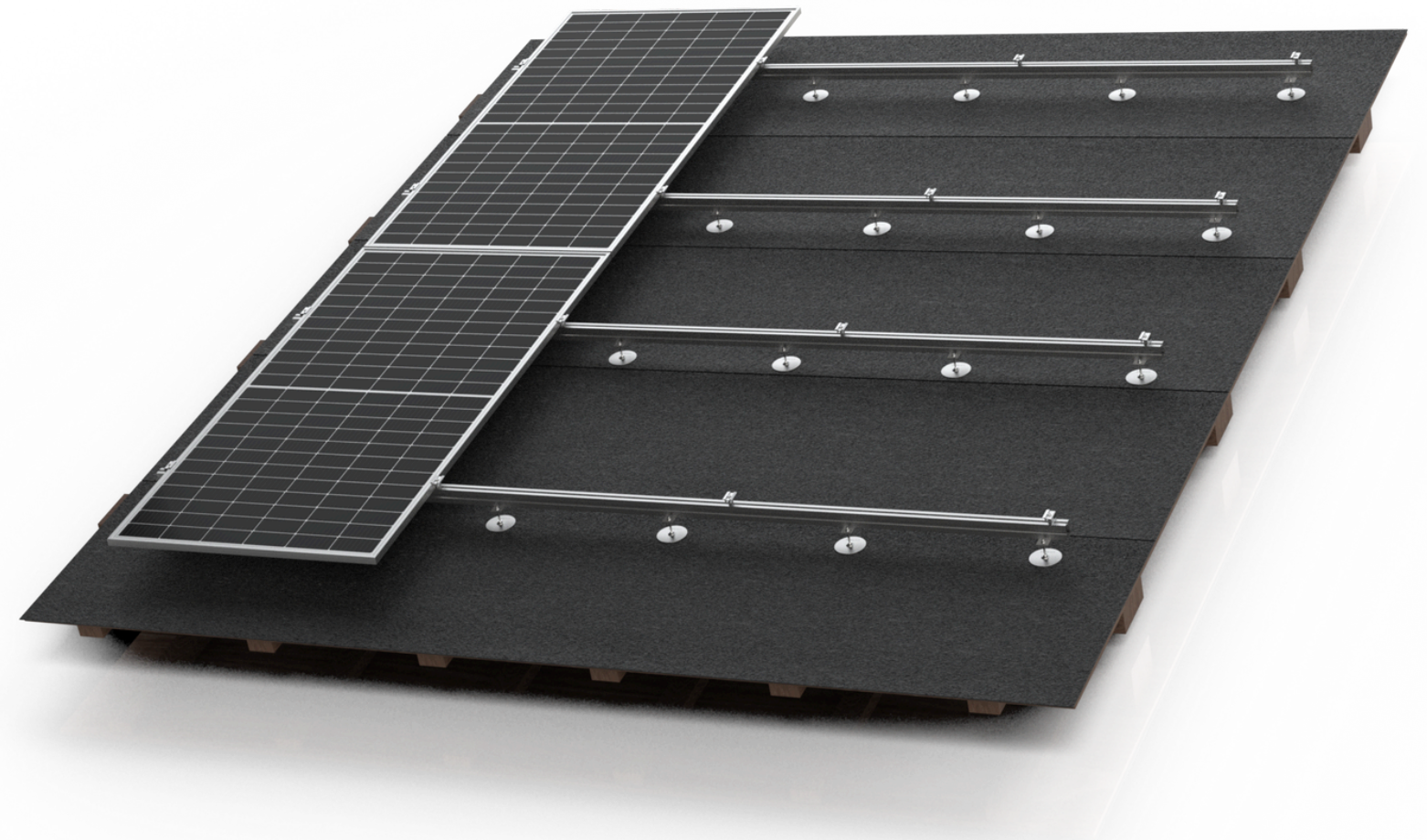


S-Flashing Plate

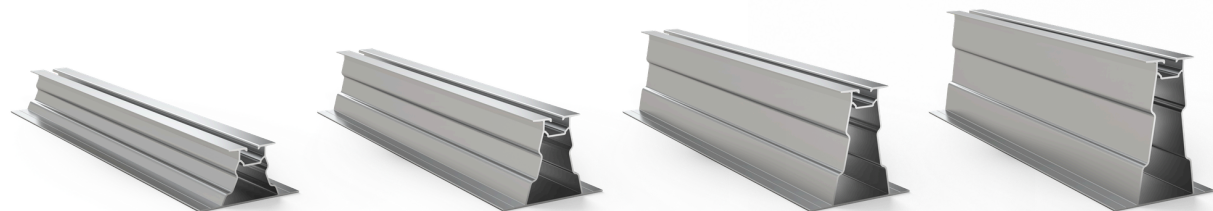
Bitumen Roofs

Durable systems for bitumen-based roll membrane roofs.
Resistant to UV rays, water, and environmental loads.

- + Compatible with roll bitumen roofs with a wooden substructure
- + High resistance to UV rays and complete waterproof protection
- + Suitable for landscape and portrait orientations
- + Chemically compatible with bitumen roofs — no risk of reaction or deformation
- + Special wood screws in various lengths and diameters
- + Materials: EN AW-6063 T/66 aluminium, A2 stainless steel, EPDM, butyl



S-Hero
Universal Adapter



S-Raptor 40

S-Raptor 60

S-Raptor 80

S-Raptor 100



S-Connector Edge



S-Connector Flat



S-Connector Air



S-Connector Adapter

Hanger Bolts
A2 Stainless Steel
M8, M10



Specially for
WOOD
CONCRETE
STEEL

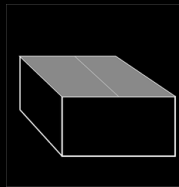
Flashing
Aluminium
EPDM



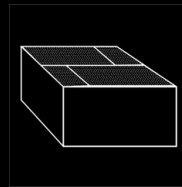
S-Flashing 360*

Flat Roofs

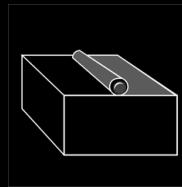
We offer safe and flexible solutions with our modular systems for flat and low-pitched roofs, such as concrete, membrane, gravel, and grass.



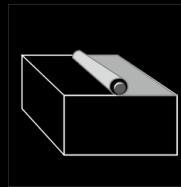
Concrete
Roofs



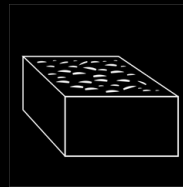
Bitumen
Roofs



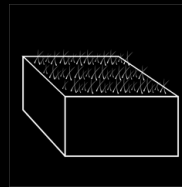
EPDM
Roofs



Membrane
Roofs



Gravel
Roofs

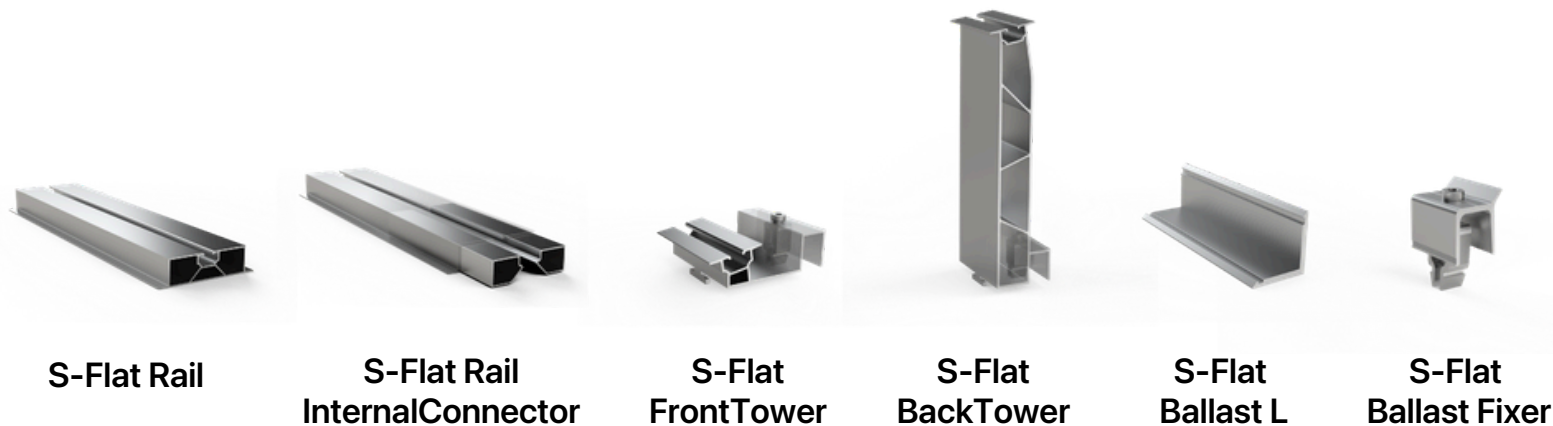
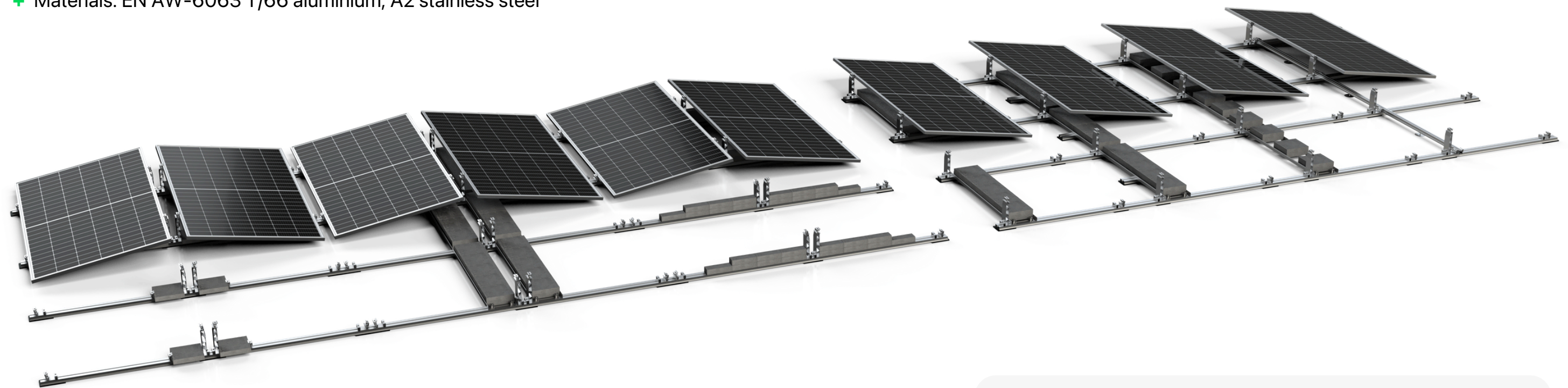


Green
Roofs

S-Flat Hybrid+

The next-generation modular system for single and double orientations, designed for easy project adaptation and limitless layout possibilities with minimal components.

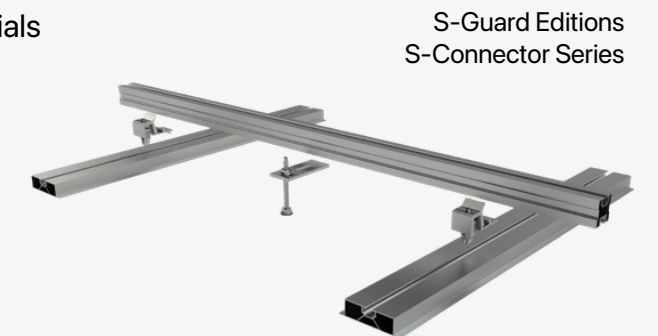
- + Quick, easy, and safe to install
- + Space-efficient design to maximize panel count
- + Featuring a 10° tilt angle
- + Clamping possible on all sides of your module frames
- + Compatible with our S-Clamp Editions panel clamps
- + Improved load distribution and reduced ballast requirements
- + Materials: EN AW-6063 T/66 aluminium, A2 stainless steel



Fix your system to the structure.

(Required fastening materials are selected based on the specific roof type.)

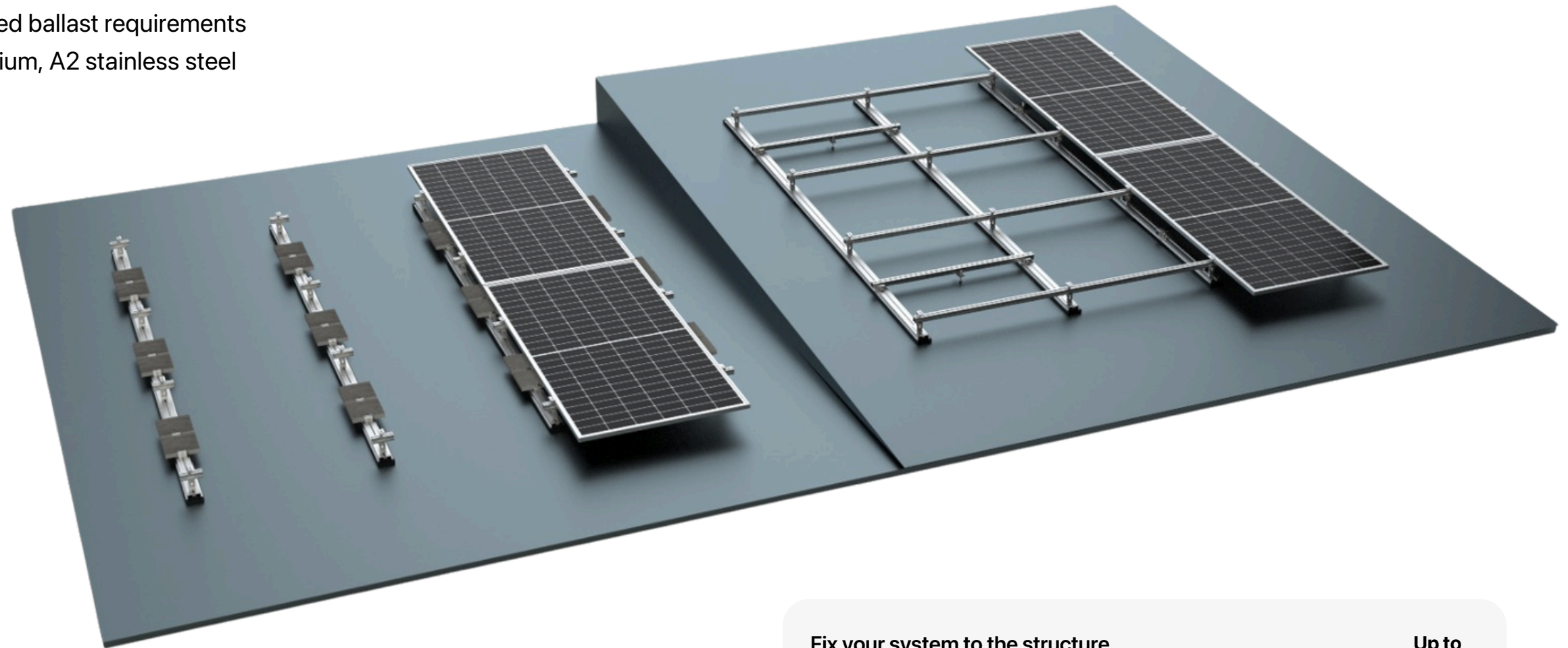
Roof Types
 Concrete
 EPDM
 Roll Bitumen
 TPO/PVC Membrane



S-Flat GridPro

All-in-one, cost-effective mounting solutions for flat and low-pitched roofs (up to 10°).

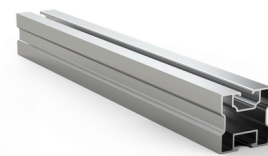
- + Quick, easy, and safe to install
- + Full rail length option is also available
- + For extra loads, S-Flat Ballast L is compatible
- + Compatible with our S-Clamp Editions panel clamps
- + Improved load distribution and reduced ballast requirements
- + Materials: EN AW-6063 T/66 aluminium, A2 stainless steel



S-Flat Rail



S-Hero
Universal Adapter



S-Guard 40

Fix your system to the structure.

(Required fastening materials are selected based on the specific roof type.)

Roof Types

Concrete

EPDM

Roll Bitumen

TPO/PVC Membrane



S-Guard Editions
S-Connector Series

Up to
10°

Contact Us

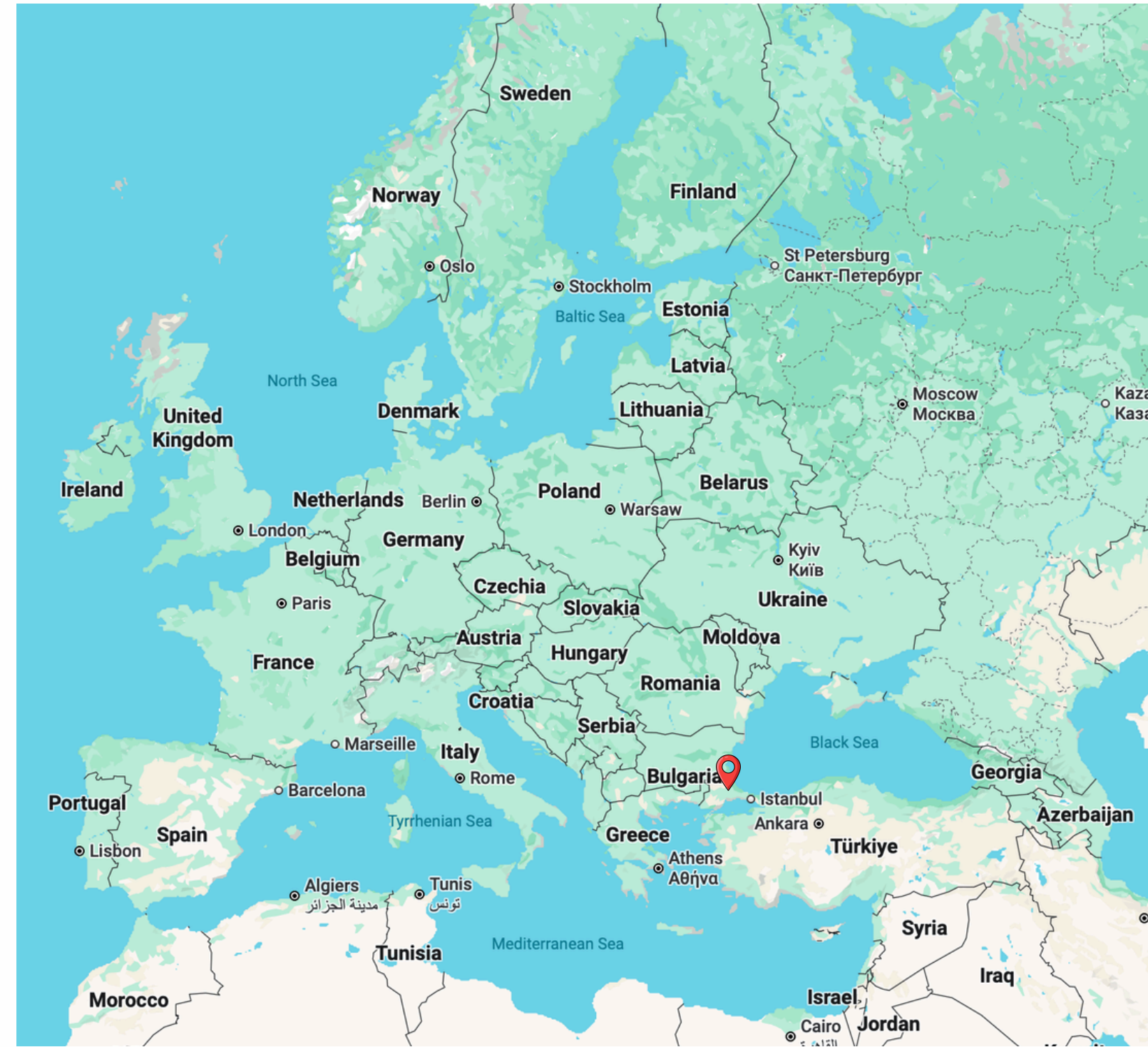
We're always interested to hear about new projects, so please feel free to reach out on the channels below of you'd like to collaborate with us.

Mail
info@standartaluminyum.com

Website
www.standartaluminyum.com

Phone
+90 (288) 502 11 11

Address
**Kırklareli OSB 7. Cadde No:18
39100 Merkez-Kırklareli
Türkiye**





Solar Mounting Systems
Product Brochure
2026

STANDART^{AI}